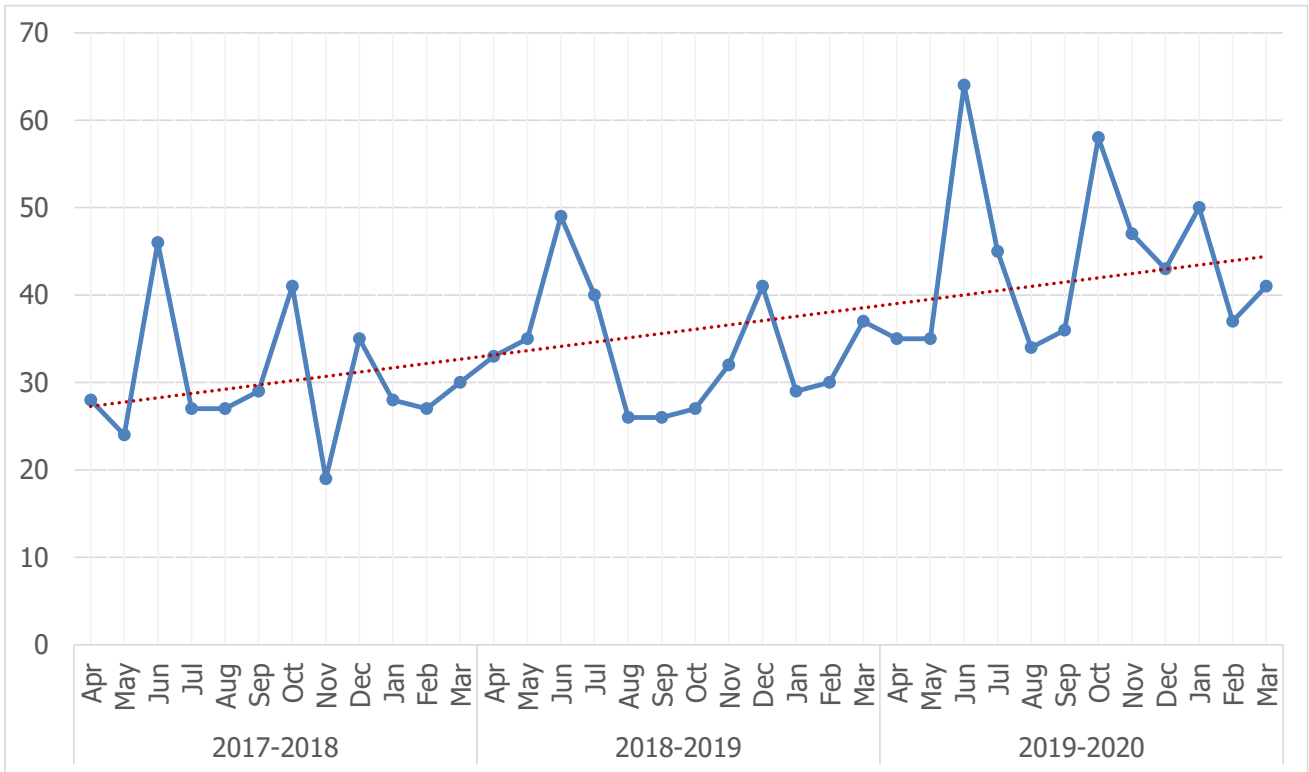


OFFENCES AGAINST THE PERSON



	2017-2018	2018-2019	2019-2020	Comparison to 2018/19
Recorded	361	405	525	+29.6%
Finalised	361	402	512	--
Detected	209	209	220	--
Detection Rate	58%	52%	43%	-9.0%

This includes all offences against the person, including Serious and Common Assaults, as well as rarer offences such as murder and child cruelty. Common Assault and Serious Assault have also been shown separately on the following pages.

The number of Offences against the Person recorded increased by 29.6% when compared to 2018-19. For detailed breakdown see Annex B, table 6 below:

ANNEX B: TABLE OF RECORDED CRIMES

Note that the following tables in this annex only include offences investigated that are categorised as necessary to include in recorded crime figures. See previous page for detail on what detection rate figure indicates. The rate is not calculated on the number of investigations recorded, but number of investigations finalised in each year.

Table 1: Offences against the Person

Offence Group	Sub Group	Offence Title	2017-2018		2018-2019		2019-2020	
			Recorded	Detection Rate	Recorded	Detection Rate	Recorded	Detection Rate
OFFENCES AGAINST THE PERSON	COMMON ASSAULT	Common Assault	294	57%	321	54%	404	41%
	SERIOUS ASSAULT	Actual Bodily Harm	40	59%	43	50%	69	49%
		Attempted Grievous Bodily Harm					1	
		Attempted Grievous Bodily Harm with intent			1	100%		
		Attempted wounding with intent	1	100%				
		Causing bodily harm by dangerous driving	1	100%	1	100%	1	100%
		Causing serious bodily harm by careless / inconsiderate driving					2	100%
		Grievous Bodily Harm	3		9	13%	18	74%
		Grievous Bodily Harm with intent	5	75%	7	57%	4	50%
		Wounding with intent	8	64%	6	20%	5	17%
	THREATS TO KILL	Threats to kill	2	25%	11	30%	11	36%
	CHILD CRUELTY	Child cruelty	5	88%	6	33%	2	50%
	MURDER	Attempted murder	1	100%			3	33%
		Murder					1	
	DEATH BY DRIVING	Causing death by careless or inconsiderate driving	1	100%			1	100%
		Causing death by dangerous driving					1	
	MANSLAUGHTER	Manslaughter					1	
KIDNAPPING	Unlawful detention					1		
Total			361	58%	405	52%	525	43%