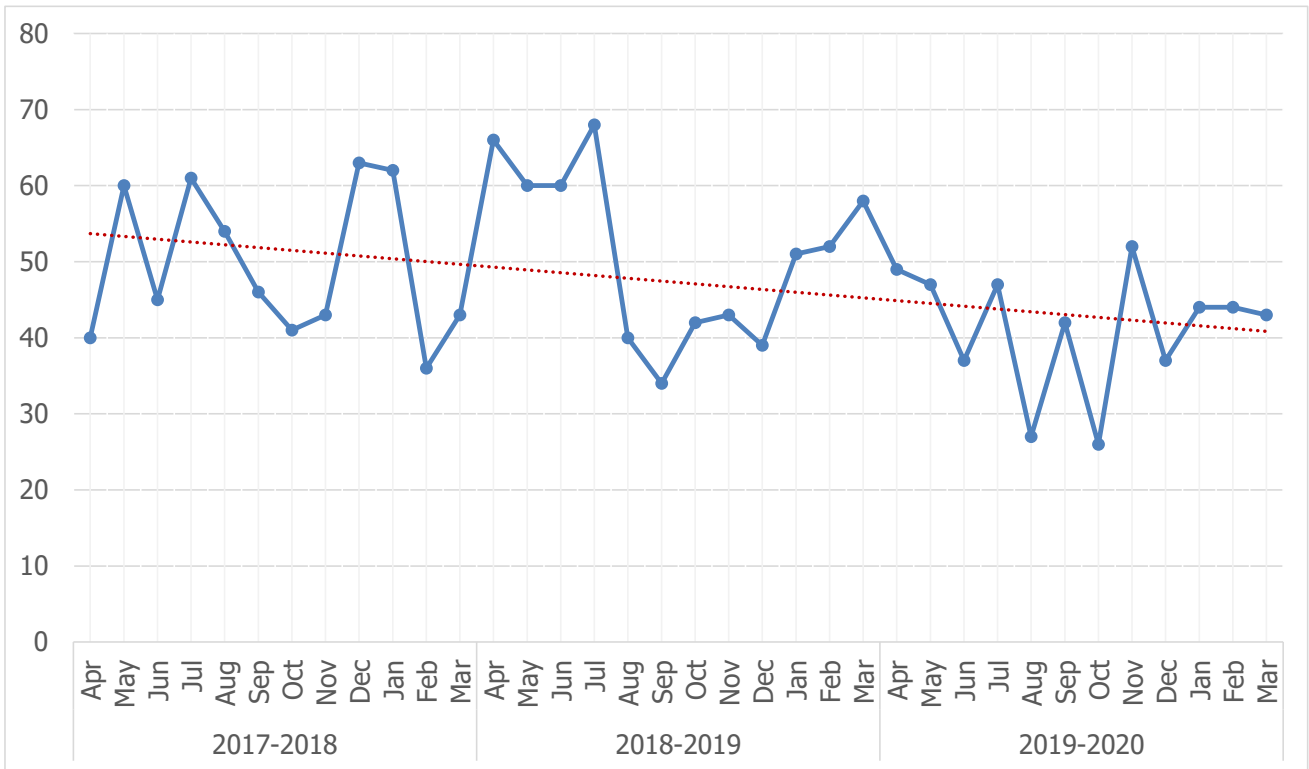


## OFFENCES AGAINST PROPERTY



	2017-2018	2018-2019	2019-2020	Comparison to 2018/19
<b>Recorded</b>	<b>594</b>	<b>613</b>	<b>495</b>	<b>-19.2%</b>
<b>Finalised</b>	607	589	535	--
<b>Detected</b>	150	157	140	--
<b>Detection Rate</b>	<b>25%</b>	<b>27%</b>	<b>26%</b>	<b>-0.5%</b>

Offences against Property<sup>1</sup> includes criminal damage and arson. The number of Offences against Property recorded decreased by 19.2% when compared to 2018-19. For detailed breakdown see Annex B, Table 1 below:

<sup>1</sup> Titled 'Criminal Damage' in previous reports.

## ANNEX B: TABLE OF RECORDED CRIMES

Note that the following tables in this annex only include offences investigated that are categorised as necessary to include in recorded crime figures. See previous page for detail on what detection rate figure indicates. The rate is not calculated on the number of investigations recorded, but number of investigations finalised in each year.

**Table 1: Offences against Property**

Offence Group	Sub Group	Offence Title	2017-2018		2018-2019		2019-2020	
			Recorded	Detection Rate	Recorded	Detection Rate	Recorded	Detection Rate
<b>OFFENCES AGAINST PROPERTY</b>	<b>CRIMINAL DAMAGE DANGEROUS INTERFERENCE</b>	Attempted Criminal Damage		100%	1		3	67%
		Attempted Criminal Damage to motor vehicle			1	100%	1	100%
		Criminal Damage	323	31%	333	33%	251	38%
		Criminal Damage to motor vehicle	252	15%	250	18%	214	11%
		Criminal Damage with intent to endanger life					2	100%
		Post Office Interference					2	
	<b>ARSON</b>	Arson	9	30%	9	13%		50%
		Arson destroy / damage property	3	67%	3		7	14%
		Arson with intent to endanger life			6		2	40%
		Attempted arson	2				1	
	<b>CRIMINAL DAMAGE</b>	Threats to commit damage	5	83%	10	75%	12	31%
	<b>Total</b>		<b>594</b>	<b>25%</b>	<b>613</b>	<b>27%</b>	<b>495</b>	<b>26%</b>