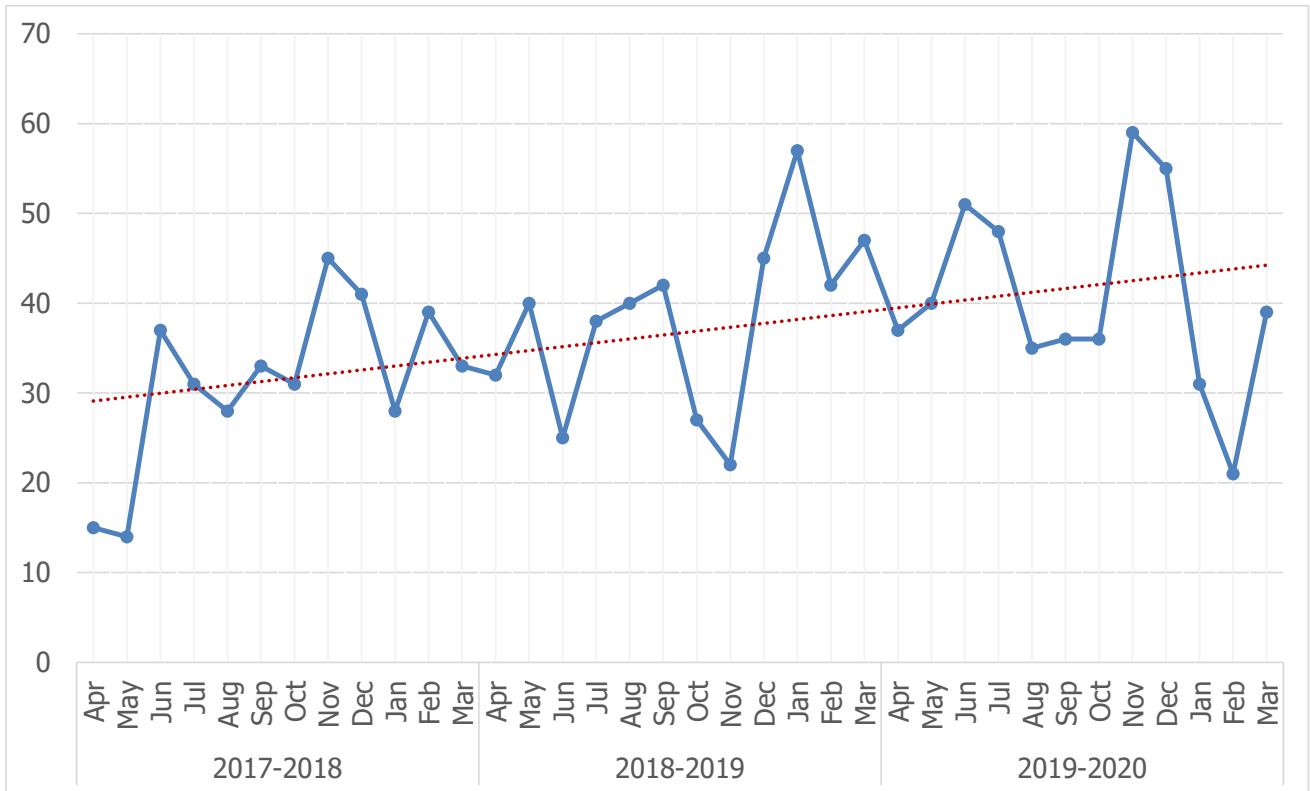


DRUG OFFENCES



	2017-2018	2018-2019	2019-2020	Comparison to 2018/19
Recorded	375	457	488	+6.8%
Finalised	365	444	470	--
Detected	318	402	400	--
Detection Rate	87%	91%	85%	-5.4%

The number of Drug Offences recorded increased by 6.8% when compared to 2018-19. For detailed breakdown see Annex B table 1 below:

ANNEX B: TABLE OF RECORDED CRIMES

Note that the following tables in this annex only include offences investigated that are categorised as necessary to include in recorded crime figures. See previous page for detail on what detection rate figure indicates. The rate is not calculated on the number of investigations recorded, but number of investigations finalised in each year.

Table 1: Drug Offences

Offence Group	Sub Group	Offence Title	2017-2018		2018-2019		2019-2020	
			Recorded	Detection Rate	Recorded	Detection Rate	Recorded	Detection Rate
DRUG OFFENCES	DRUGS - SUPPLY USE MANUFACTURE	Attempted possession of controlled class A drugs	1	100%			1	100%
		Attempted possession of controlled class B drugs					2	100%
		Attempted possession of controlled class C drugs					1	
		Cultivation of cannabis	3	100%	9	100%	5	71%
		Permit premises to be used for drugs	2	100%	1	100%		
		Possession of controlled class A drugs	60	93%	63	90%	65	84%
		Possession of controlled class A drugs with intent to supply	12	92%	22	90%	34	83%
		Possession of controlled class B drugs	213	96%	275	95%	260	93%
		Possession of controlled class B drugs with intent to supply	18	100%	21	95%	22	86%
		Possession of controlled class C drugs	12	73%	17	94%	18	100%
		Possession of controlled class C drugs with intent to supply			1		5	100%
		Production of Class A controlled drugs	18	33%	12	55%	22	67%
		Production of Class B controlled drugs	20	38%	24	67%	37	58%
		Production of Class C controlled drugs	1	100%	3	100%	1	
		Supply articles for drugs use					1	
		Supply of Class A controlled drugs	8	63%	3	33%	7	17%
		Supply of Class B controlled drugs	6	33%	6	63%	6	63%
Supply of Class C controlled drugs	1	100%			1			
TOTAL			375	87%	457	91%	488	85%