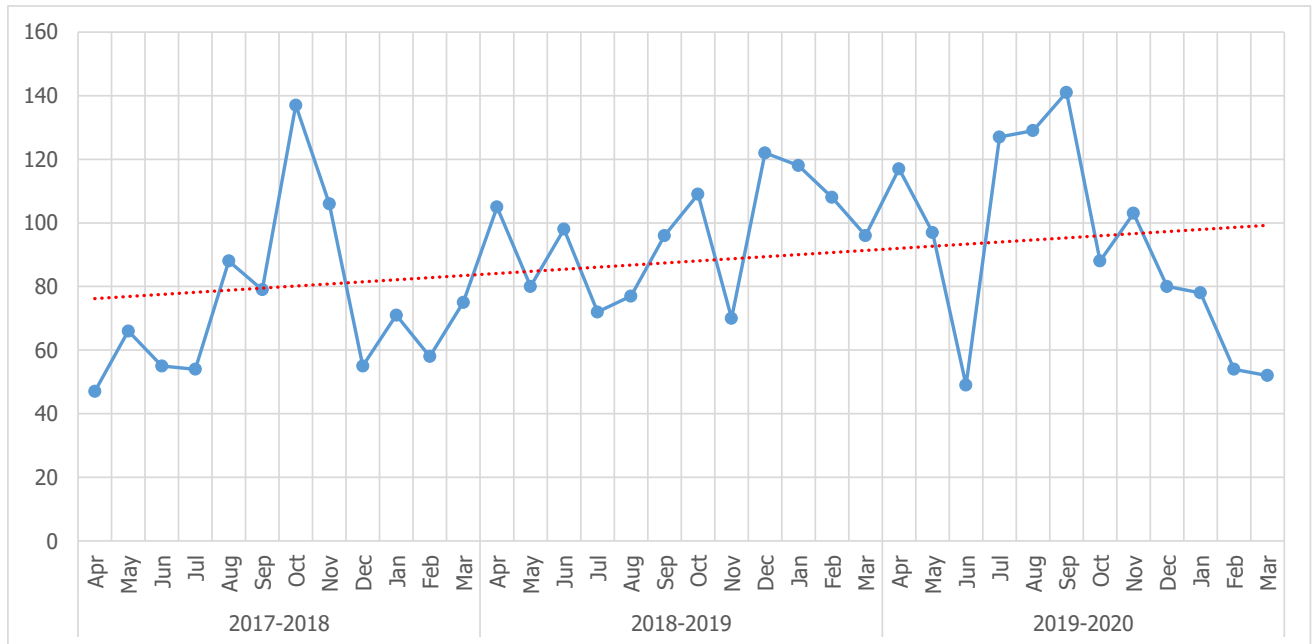


## OTHER POLICE ACTIVITY

### STOP SEARCHES

The following chart shows the number of Stop Searches of persons and vehicles that were conducted over the past three years. Due to recording processes some stop searches that were conducted in 2020 may not yet be included within the data.



	2017-18	2018-19	2019-20	Comparison to 2018/19
<b>Total</b>	891	1151	1115 <sup>1</sup>	<b>-3%</b>

There was a decrease of 3% in the number of stop searches conducted in 2019-20 when compared to the total recorded in 2018-19, however it is suspected that some stop searches were not recorded during June 2019. During 2019-20 **21%** of stop searches resulted in stolen or prohibited items being found.

There were over 13 stop searches for every 1,000 people on the Island during 2019-20. This is double the number conducted in UK where there were nearly 7 stop searches for every 1,000 people<sup>2</sup> for the most recent year for which data is available.

<sup>1</sup> This figure may be under reported due to the change in recording systems between Mentor and Connect. It is suspected that part of the data for June 2019 has not been recorded.

<sup>2</sup> <https://www.ethnicity-facts-figures.service.gov.uk/crime-justice-and-the-law/policing/stop-and-search/latest#by-ethnicity> 2018/19 most recent figures available