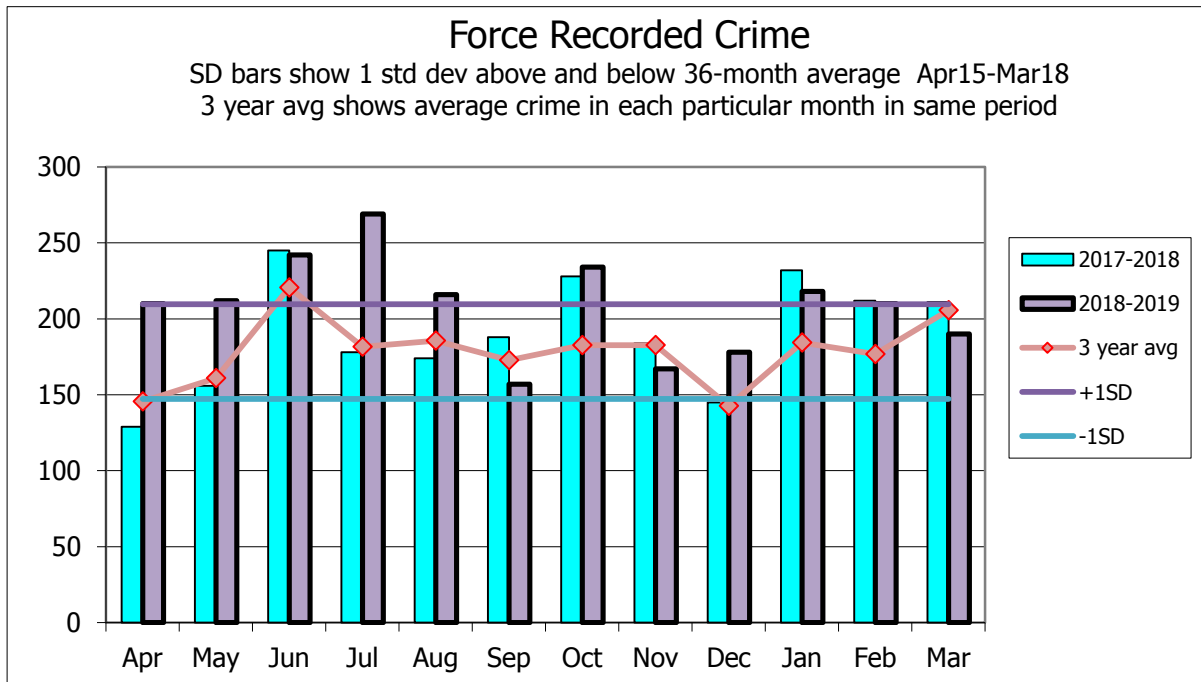


ALL ISLAND RECORDED CRIME

The following chart shows number of crimes recorded in each month (excluding records with status of rejected/duplicate or No Crime), relating to crimes committed over All Island.

As far as possible all statistics in this report show the current data available for 2018-2019, and make comparison to the data from previous years as published in previous annual reports.



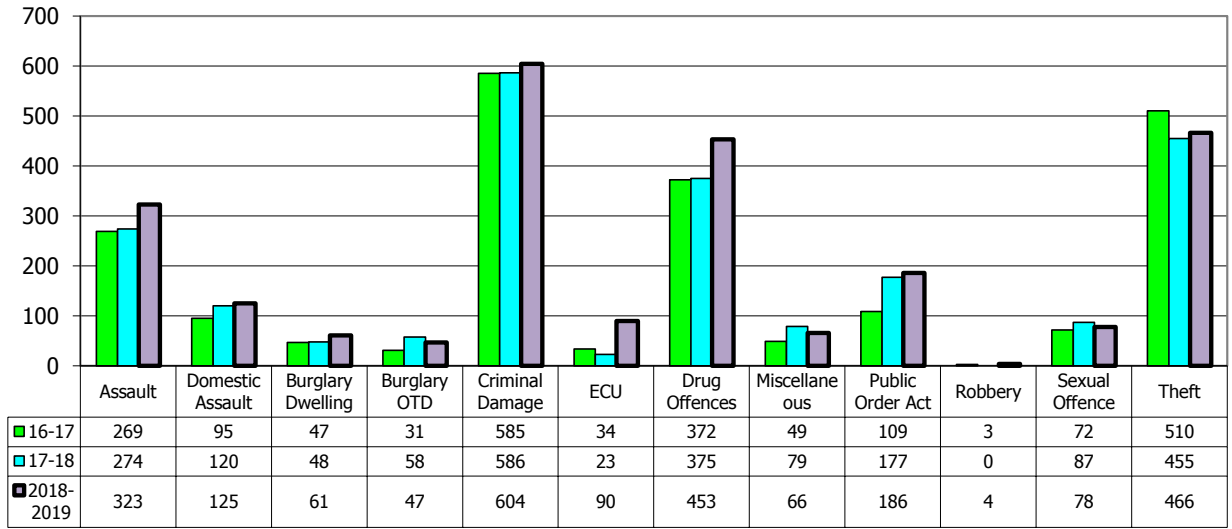
Crime Recorded since April	10-11	11-12	12-13	13-14	14-15	15-16	16-17	17-18	18-19	change this/last year	change this/average last 3 years
	2826	2657	2203	2110	2304	1968	2176	2282	2503	+10%	+17%

- Recorded crime increased by 10% when compared to the 2017-18 year and by 17% when compared to the three-year average.
- The rise compared to last year is predominantly due to increases in recording of Drug Offences (particularly Possession of Class B Drugs), Fraud offences (with the formation of the Economic Crime Unit) and Assaults (with increases in particular in recording of assaults on Police Officers and Common Assaults).

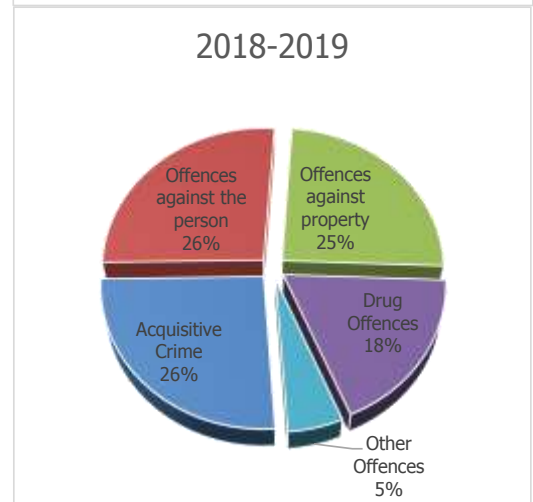
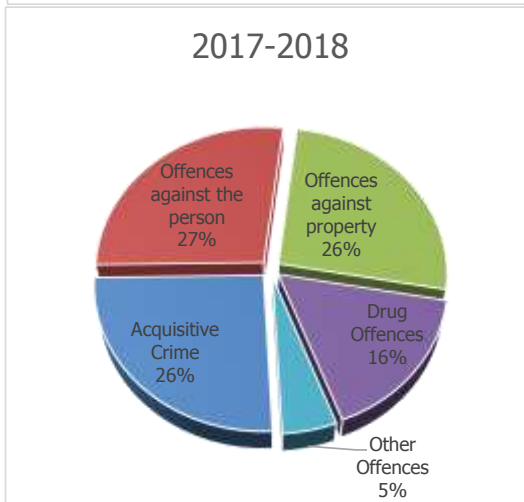
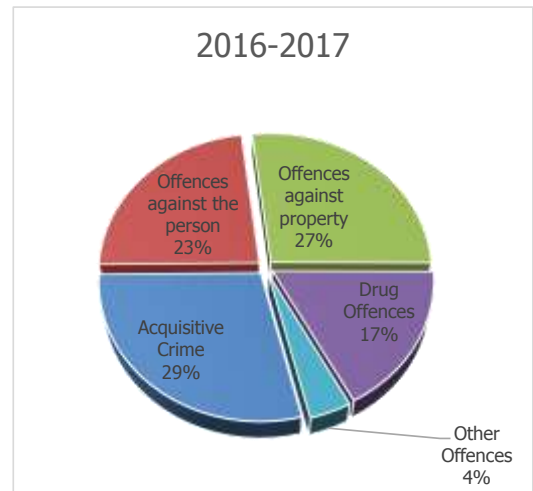
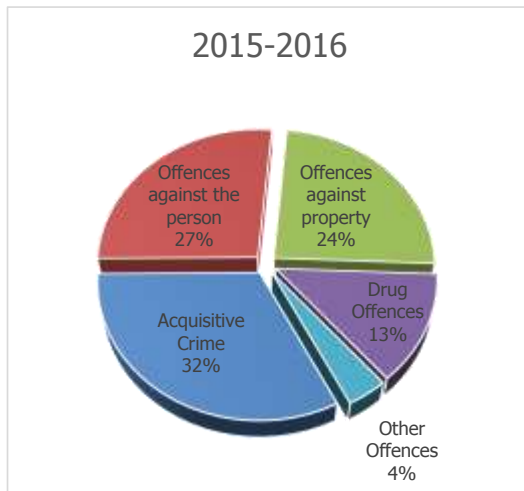
Detection Rate	13-14	14-15	15-16	16-17	17-18	18-19	Change from last year
Total	49.2%	43.9%	49.6%	46.9%	47.2%	49.6%	+2.4%

- There was an increase in the overall detection rate of almost 2½%.

Recorded Crime by Offence Category



Types of Offending – Crime Mix

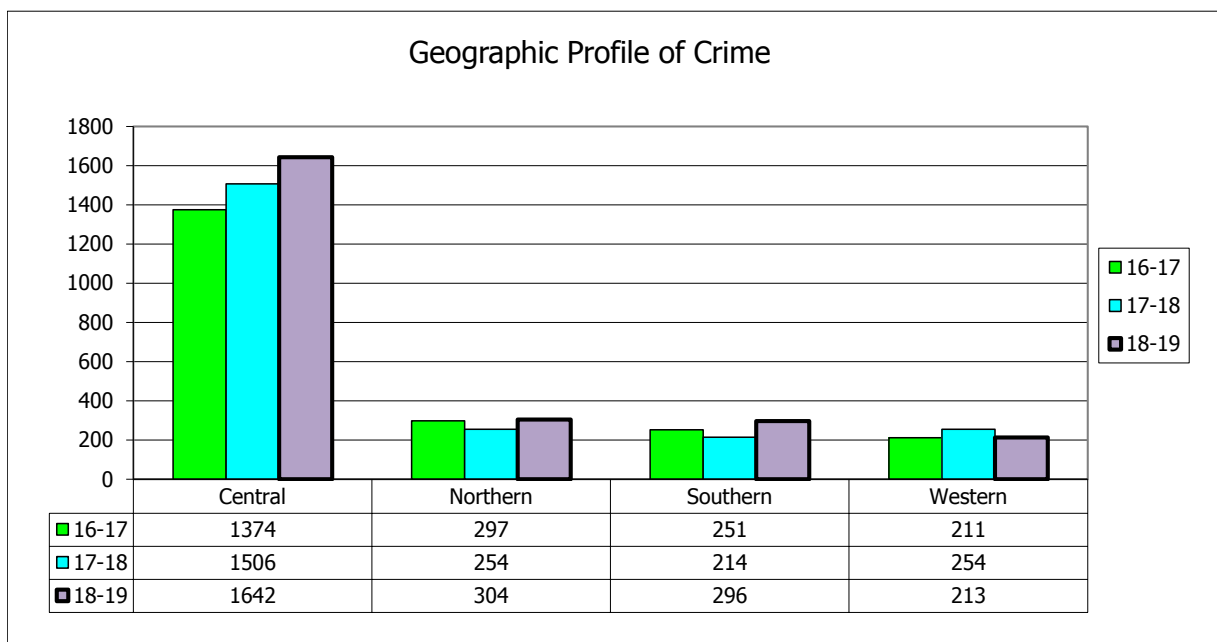


For reference the category groupings are:

Super Category	Sub Category
Acquisitive Crime	Burglary Deception Robbery Theft
Offences against the person	Murder Assaults and Public Order Sexual Offences
Offences against property	Damage Damage to Motor Vehicles
Drug Offences	Drug Offences
Other Offences	Child Offences Driving Offences Firearms Offences Livestock Offences Offensive Weapon Police Offences Communications Offences

Which sub category a recordable offence is grouped in here in some cases differs from categorisation elsewhere in report.

Five years ago Acquisitive Crime made up almost two-fifths of all recorded crime, and Drug Offences only 9%. Both Offences against the Person and against Property accounted for very similar proportions as in recent years (neither more than 2% different).



- A small proportion of crimes cannot be ascribed to a particular neighbourhood policing team, so the above figures will not fully tally with overall crime (there were 48 such offences during the year). The areas covered by each neighbourhood policing team are shown in a map on page 21.