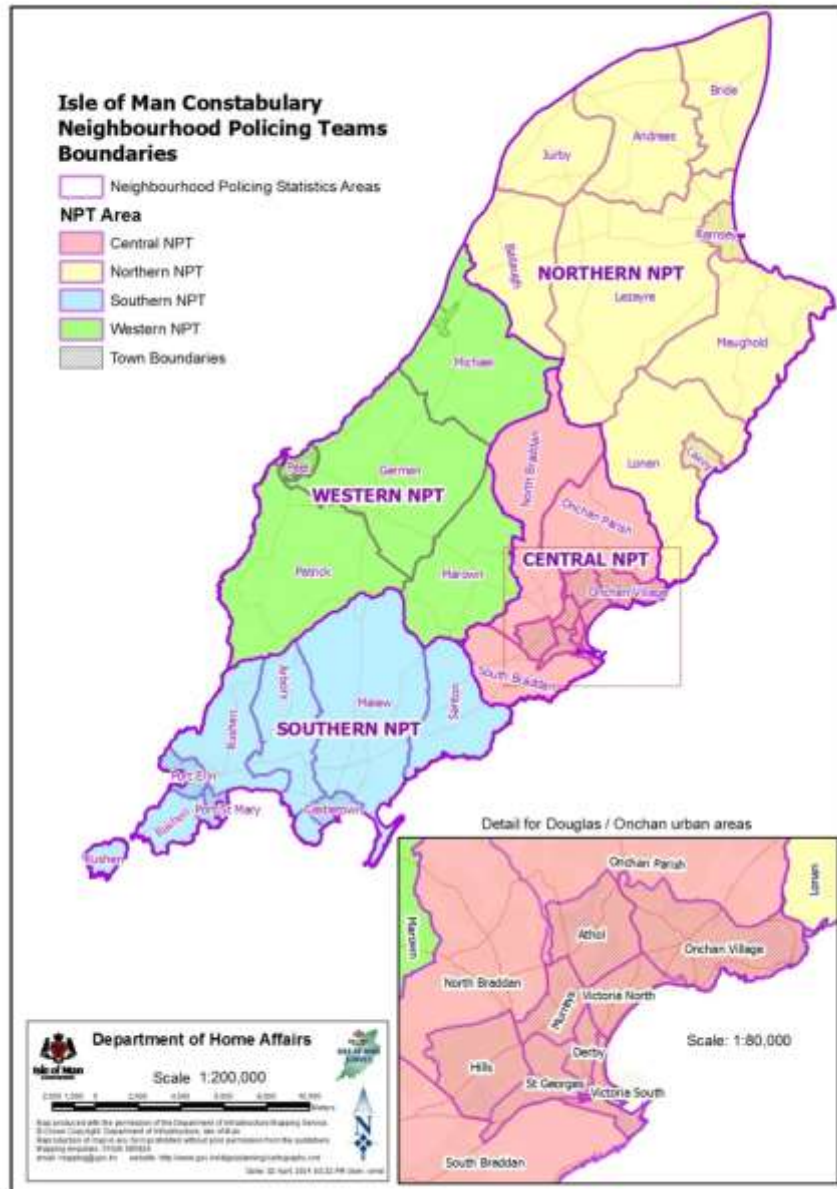


GEOGRAPHICAL CRIME

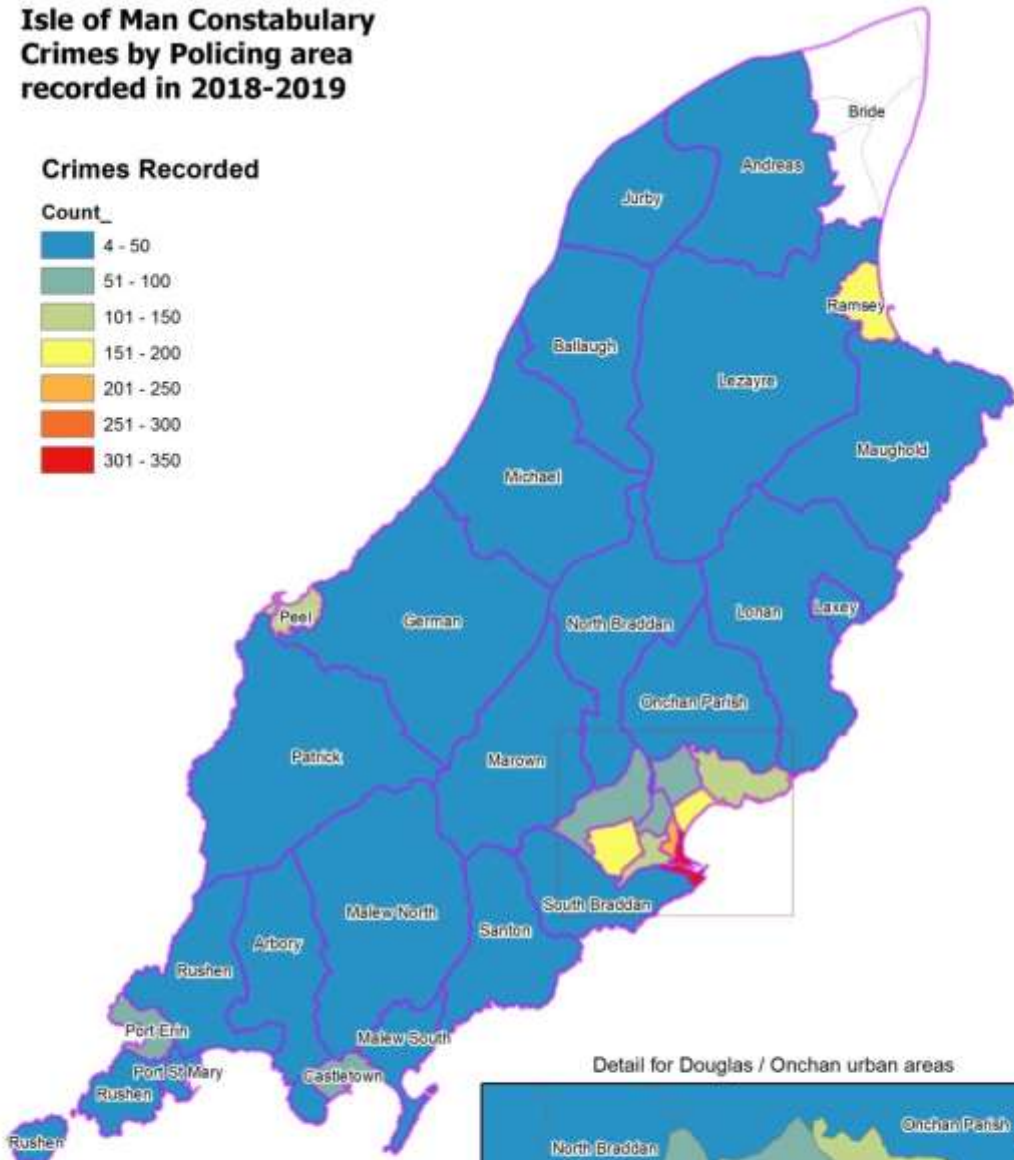
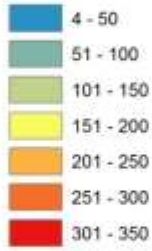


- As in previous years, the report includes maps to show the geographical prevalence of crime.
92 crimes not mapped
- The first map shows the number of crimes recorded in each area, taking no account of population. Unsurprisingly this shows that there is more crime in populous urban areas than in more sparsely populated rural areas. The parish of Bride stands out as no crimes at all were mapped to the parish in 2018-2019.
- In the second map (adjusted by population) it is noteworthy that highest crime rate area (Victoria South) shows distortion due to its low resident population (less than 1000 population, but with 391 recorded crimes mapped to the area).
- The maps show in an impactful way just how crime-free large parts of the Island actually are. Less than a decade ago there were concerns about crime levels in towns outside Douglas, especially Castletown and Ramsey. The maps show that crime levels almost everywhere outside Douglas are very low.

Isle of Man Constabulary Crimes by Policing area recorded in 2018-2019

Crimes Recorded

Count_



Detail for Douglas / Onchan urban areas



Scale: 1:80,000

Department of Home Affairs

Isle of Man Government

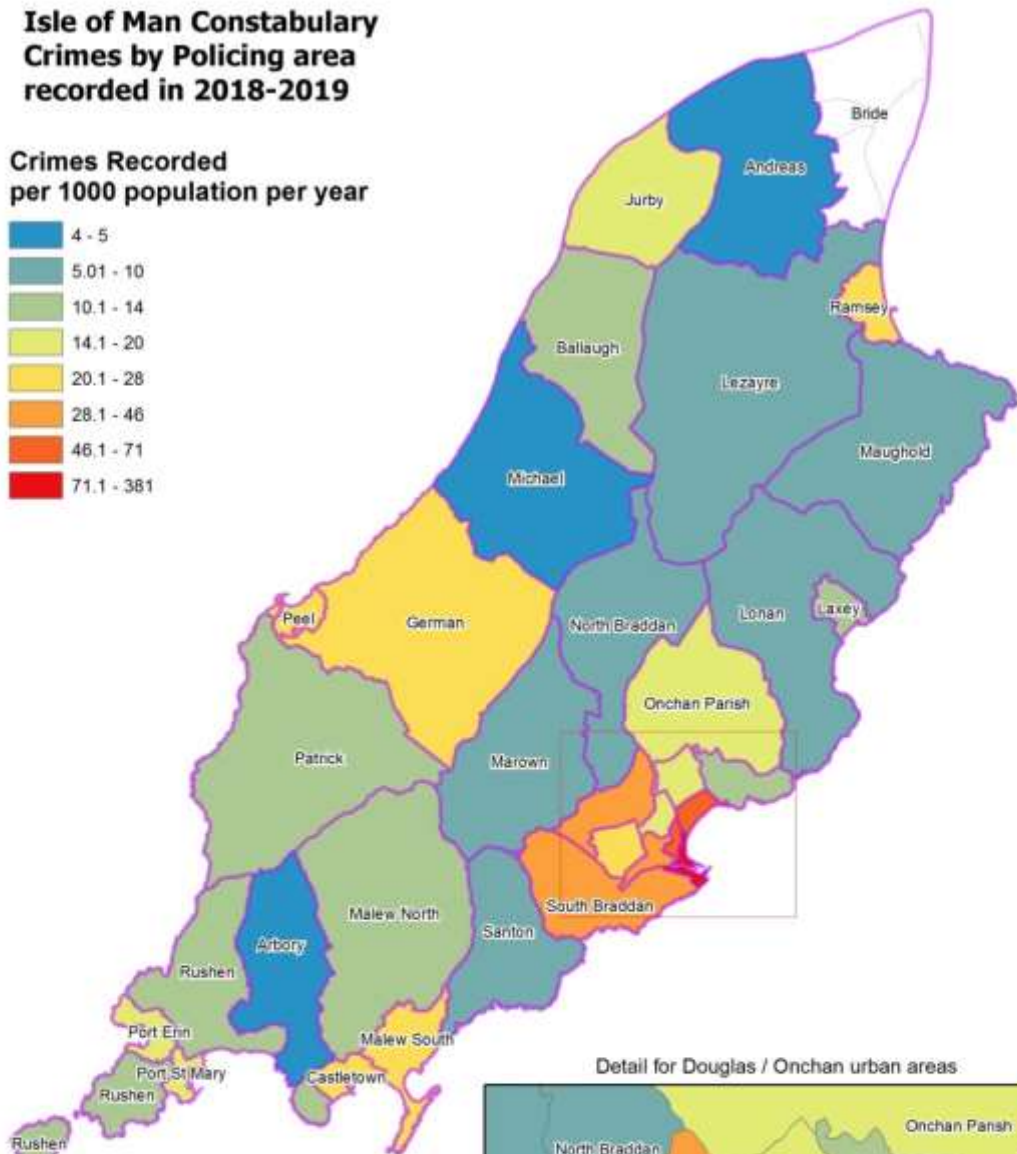
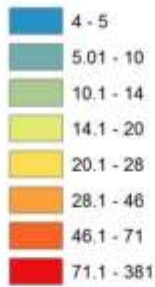
Scale: 1:200,000

Map produced with the permission of the Department of Infrastructure Mapping Service.
© Crown Copyright. Department of Infrastructure, Isle of Man.
Reproduction of map in any form prohibited without prior permission from the publishers.
Mapping enquiries: 01624 865024
email: mapping@gov.im website: <http://www.gov.im/edge/planning/cartography> url

Date: 18 April 2019 09:25 AM User: wend

Isle of Man Constabulary Crimes by Policing area recorded in 2018-2019

Crimes Recorded
per 1000 population per year



Detail for Douglas / Onchan urban areas



Scale: 1:80,000

Department of Home Affairs

Scale 1:200,000

Map produced with the permission of the Department of Infrastructure Mapping Service.
© Crown Copyright. Department of Infrastructure, Isle of Man.
Reproduction of map in any form prohibited without prior permission from the publishers.
Mapping enquiries: 01624 860024
email: mapping@gov.im website: <http://www.gov.im/edge/planning/cartography.html>
Date: 18 April 2020 13:02 AM User: wmd